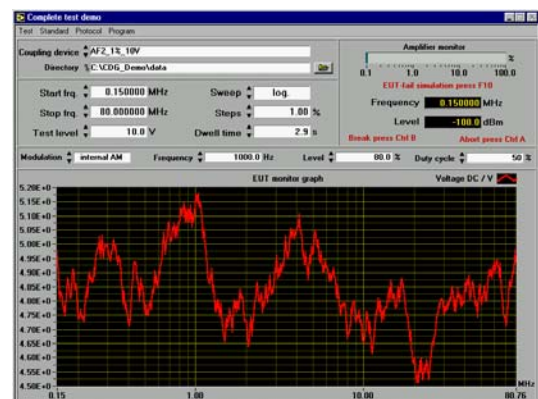
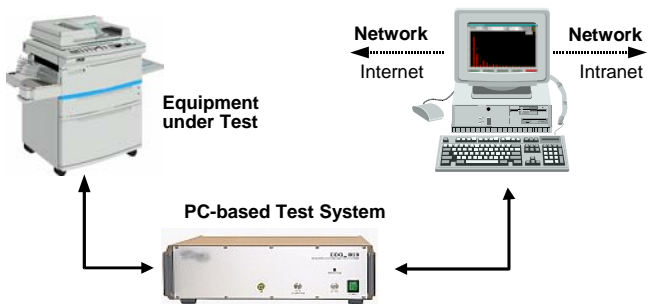


CDG 6000 CDG 6000-75

Conducted disturbance,
low-cost test generator
according to IEC / EN 61000-4-6



- Frequency range 150 KHz to 230 MHz
- CDG 6000-75 with 75 W amplifier
- Output voltage (CDN or coupling clamp)
 CDG 6000 ^I max. 15 V with 80% AM, (25W amplifier)
 CDG 6000-75 ^{II} max. 40 V with 80% AM, (75W amplifier)
- Computer-based system (controlled by USB).
 - Unequalled flexibility, easy operation, fully expandable for future standards modification.
 - Easy integration in automated measurement and test systems
- Self calibration of the test system
- RF-generator, amplifier and RF-voltmeter may as well be used as stand-alone devices
- Connections:
 - External multimeter for monitoring EUT
 - EUT fail – TTL/CMOS compatible input (stops running application or sets a frequency mark)
 - External modulation signal
- Calibration of coupling / decoupling devices is performed automatically
 A mounting plate with 50/150 Ohm passage and a calibration adaptor are necessary, depending of the used CDN.
- Extensive additions like attenuators, calibration kits, etc. deliverable.



The draw shows the monitoring of EUT

^I max. 10V with 6 dB attenuator
^{II} max. 30V with 6 dB attenuator

Introduction

Radiated disturbances from external sources show usually longer wave lengths than the dimensions of a single component in an installation. Although there exist disturbances, caused by induced RF interference in power and signal lines. The dimensions of the lines corresponds usually several wave lengths and act therefore as antennas.

The EN 61000-4-6 describes a test set up to simulate the induction without a complex set up with antennas, field measurement equipment and highly screen test chambers. Via coupling networks and coupling clamp's sine waves are induces directly into power and signal lines. The EUT keeps its usual place in the installation; the complete unit can be tested in its function.

Technical data

Amplitude modulation:	1 Hz to 100 kHz, 0 to 100% (intern / extern)
Pulse modulation:	1 Hz to 100 kHz, duty cycle 5 to 95%
Standards basic:	EN 61000-4-6 (Conducted disturbances induced by radio-frequency fields - immunity test)

Additions

Coupling / decoupling networks

CDN 801-M1	Ground cable
CDN 801-M2	Unscreened, power lines
CDN 801-M2+M3	
CDN 801-M3-16	
CDN 801-M3-32	
CDN 801-M4-16	
CDN 801-M4-32	
CDN 801-M4-63	
CDN 801-M4-80	
CDN 801-M5-16	
CDN 801-M5-32	
CDN 801-S1	Screened lines
CDN 801-S2	
CDN 801-S9	
CDN 801-S15	
CDN 801-S25	
CDN 801-AF2	unscreened, non balanced lines
CDN 801-AF3	
CDN 801-AF4	
CDN 801-AF6	
CDN 801-AF8	
CDN 801-T2	unscreened, balanced lines
CDN 801-T4	
CDN 801-T8	
CDN 801-RJ11	Screened /unscreened data lines
CDN 801-RJ11S	
CDN 801-RJ45	
CDN 801-RJ45S	

CDN 801-USB-C	Screened data lines
CDN 801-USB-P	

Further CDN's on demand

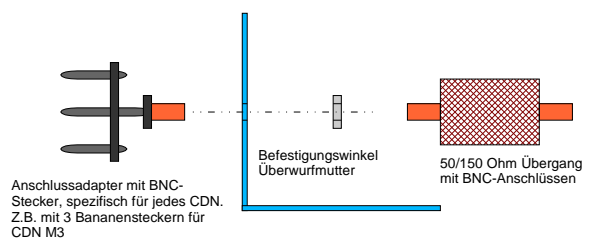
CDN calibration set

Mounting-set: **CDG A 3100**
(Mounting plate include 50 / 150 Ohm passage)

Calibration adaptor **CDG A 31xx**

It is advisable to use a calibration set.

Example of calibration set



CDG A 3101
calibration adaptor
for CDN 801-M3

CDG A 3100
Mounting plate and
passage with BNC connector

EM-coupling clamp - Type CDN-EMCL

- for cable up to 20 mm diameter
- include calibration kid
- include factory calibration